

# HOME FEATURES

- 3 Bedroom Home
- Open Concept Main Floor with Spacious Kitchen
- Upper Floor Laundry
- Large Master Bedroom with Walk in Closet
- Ensuite includes Dual Sinks and Stand-up Shower

See Area Manager for more information

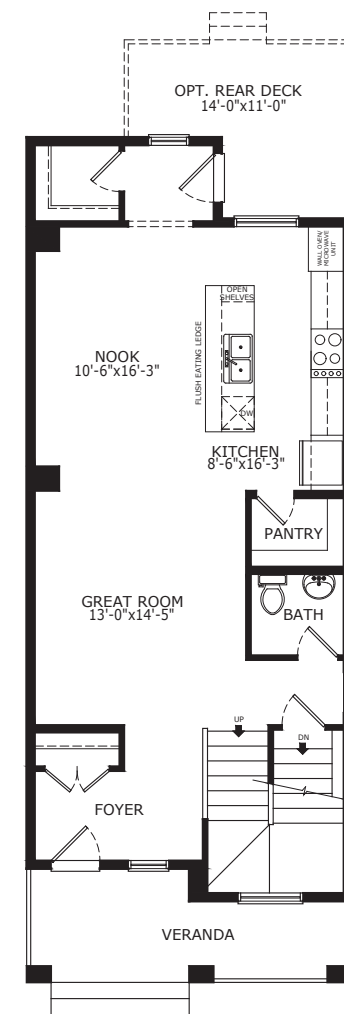
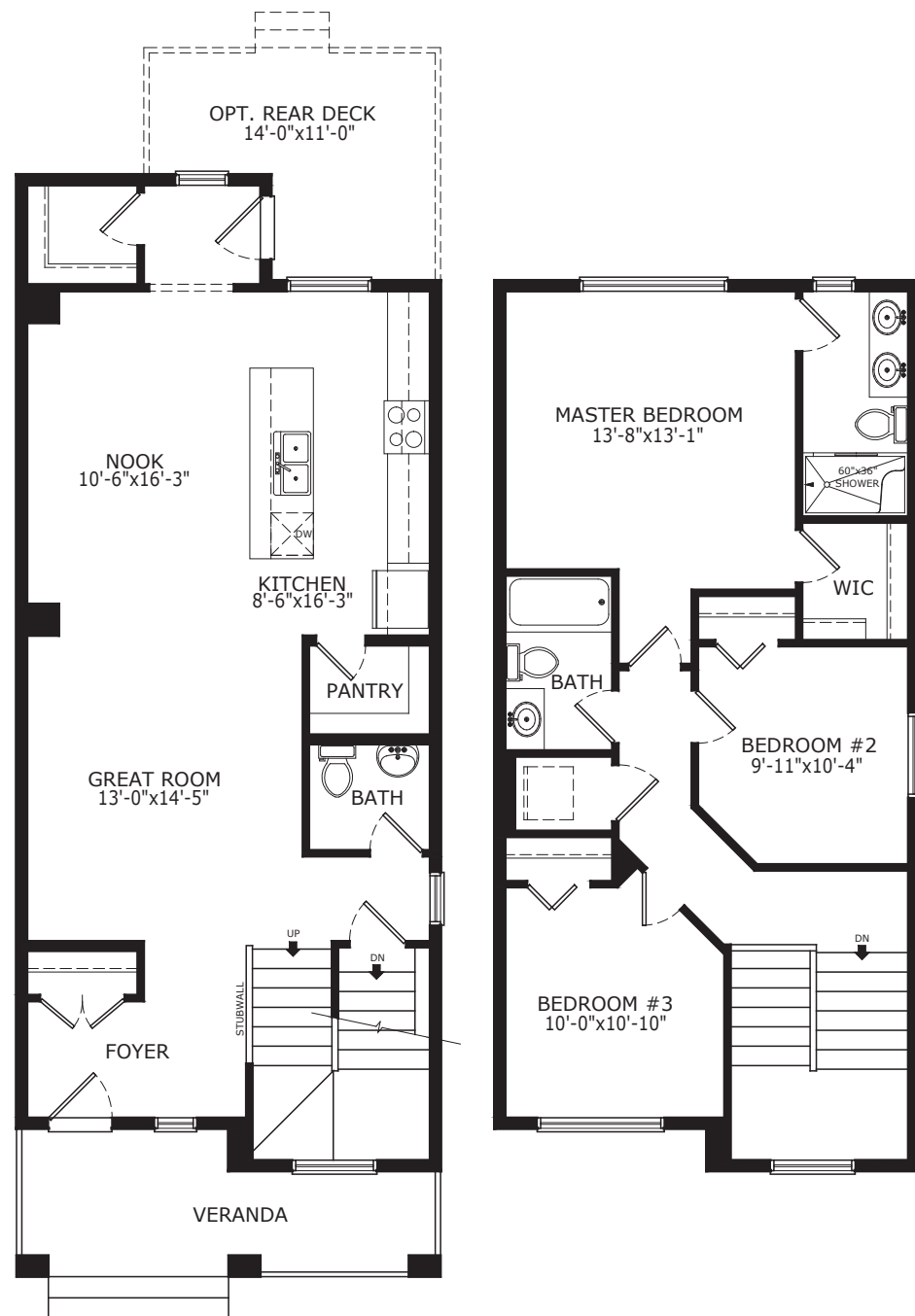


the Ramsey

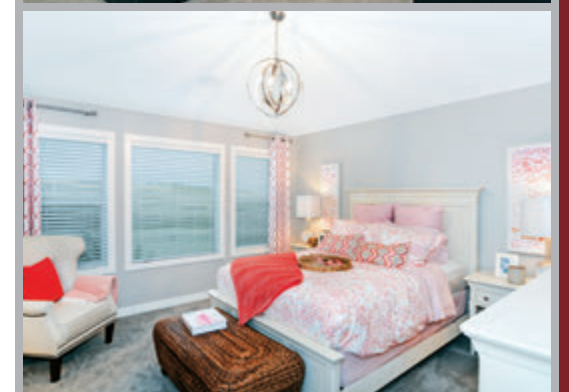
Colonial	Craftsman	Tudor	Prairie	Contemporary	Contemporary Prairie	Contemporary Arts & Crafts

MAIN 880 SQ FT | UPPER 734 SQ FT | TOTAL 1614 SQ FT

## AVAILABLE PLAN OPTIONS



Optional Executive Kitchen



© This plan is published by The Sterling Group of Companies. This elevation and floor plan are concept only and subject to change in features and specifications without notice. All rights reserved, including the rights of reproduction in whole or in part, in any form, without the permission of The Sterling Group of Companies. This brochure cannot be used for construction and does not form part of contract.

